

WIRELESS RIG FLOOR DISPLAY

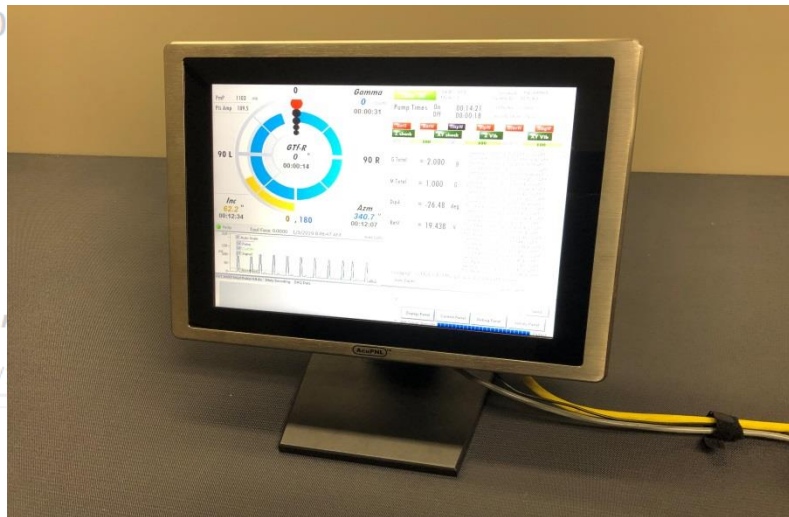
The display is light weight touch screen panel designed to simplify setup on the rig floor. Wireless Communication is provided between the rig floor and the safe area eliminating the need to run long cables from the rig floor to the safe area. Communication is done through high security, high speed communications allowing multiple computers to be connected to the MWD network in the safe area. The display provides real-time data with Pulse Directional Technologies' advanced detection software.

FEATURES

- Various Mounting options
- Standard 19 pin Amphenol Transducer plug
- Built in Hardware for detection
- Simplified surface setup via wireless communication
- Compatible with most Legacy M-Ary MWD products
- Touch screen and survey input screen for Stand Alone operations

ENVIRONMENTAL

- Operating Temperature -40°C-60°C (-40°F-140°F)
- Storage Temperature -40°C-80°C (-40°F-176°F)
- Relative Humidity <96% (Non Condensing)
- NEMA Rating NEMA4, IP64, Corrosion Resistant



CERTIFICATION

