

SURFACE INTERFACE RECEIVER (SIR)

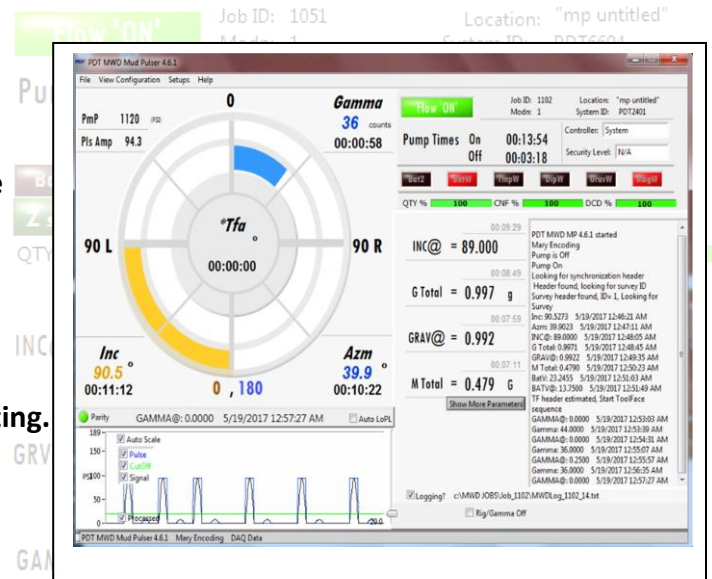
The SIR –Surface interface Receiver designed and manufactured by Pulse Directional Technologies combines EM and Mud Pulse detection into one system. Use with PDT MWD Software, the operator can decode real-time mud pulse signal or EM signal.

FEATURES

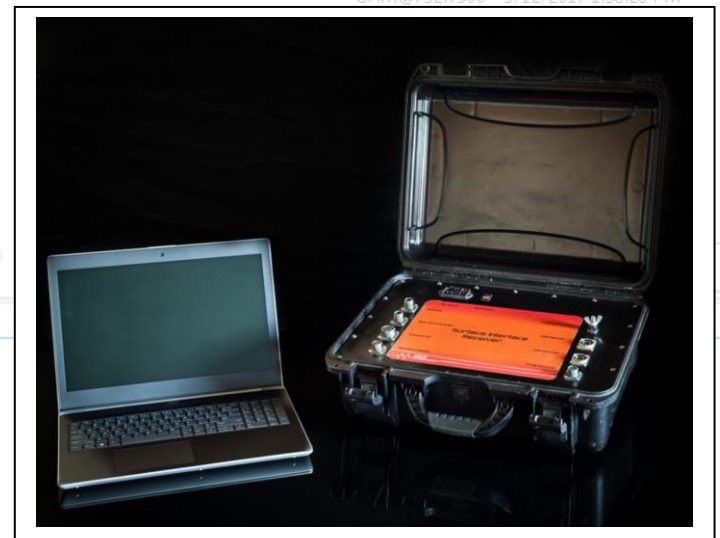
- Easy to use when wireless won't work
- Configuration of PDT Downhole tool suite
- Advance mud pulse and EM detection decoding software
- Compatible with other MWD tools
- Protective case for easy transportation
- Industry Standard connectors for RFD and Transducer
- USB interface to decoding computer
- Compatible with 2 different Rig floor display options
- Utility software for Memory Download and troubleshooting.

ENVIRONMENTAL

- Operating Temperature -40°C-60°C (-40°F-140°F)
- Storage Temperature -40°C-80°C (-40°F-176°F)
- Relative Humidity <96% (Non Condensing)



w/ gamma blanket



RIGFLOOR DISPLAY OPTIONS

Model 3200

The transfective display and LED backlighting provide excellent viewability under all ambient light conditions.

This is the perfect driller's display for displaying information from MWD systems and other Rig-floor monitoring systems.



Specifications:

- ARM 9 Core Processor running @ 190 MHz
- 64 Mb Flash Memory
- 64 Mb SDRAM
- Linux embedded or Windows CE O.S.
- Optional LAN and USB ports
- Up to 3 serial input options (RS-232, RS-485, Current loop)
- 10.4" Transfective sunlight readable LCD 640 x 480 with LED backlighting
- Intrinsically safe design
- Carrying handle and multiple mounting methods provided
- Operating power: 3 to 25 VDC, 5 watts max.
- Operating temperature: -20C to 50C
- Storage temperature: -40C to 75C
- Operating / Non-operating shock: 50 G, 11 ms half-sine
- Operating / Non-operating vibration: 1.5G RMS, 5 to 500 Hz
- Humidity: 5 to 100%
- Sealing: NEMA-4 on all six sides
- Weight: 11 lbs
- Dimensions: 10 3/4" (w) x 9 3/4" (h) x 2 3/4" (d)
- Certification: ATEX Zone I , IIB (pending)

Model HC-1360

The RD-G is a rig display providing a wide range of information.

- Compatible with popular MWD Systems.
- Viewable in direct sunlight and dim evening lighting.
- Adjustable brightness and contrast.
- Compact rugged construction.
- Four toolface history with separate Gravity Tool Face and Magne
- Graphical filtered mud pulse display.
- Displays downhole temperature, average pulse amplitude, pump voltage, and warning flags
- Includes lightweight case used for transporting display only
- Operating temperature range from -30C to 75C
- Weight: approximately 11 lbs
- Size: 8 x 13 x 2.5"

